

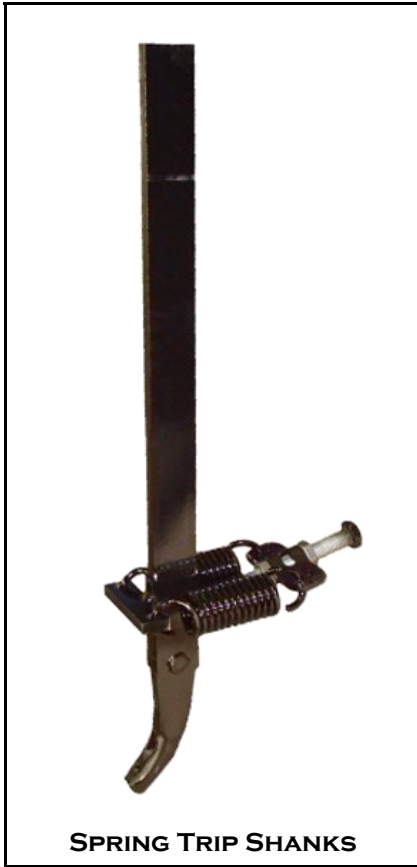


NORWEST

MANUFACTURING

71 SOUTH 215 WEST-RUPERT, ID- PHONE: (208) 436-1770 - FAX: (208) 436-1776

SECTION 200-70 SPRING TRIP DEVICES



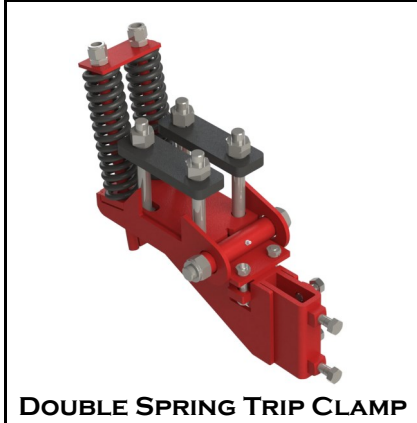
SPRING TRIP SHANKS



CRUST BUSTERS



SPRING TRIP SHANK W/
REVERSIBLE DANISH POINT

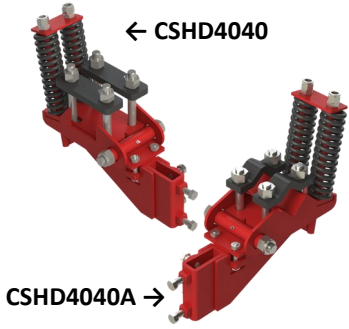


DOUBLE SPRING TRIP CLAMP



SINGLE SPRING TRIP CLAMP

DOUBLE SPRING TRIP CLAMPS

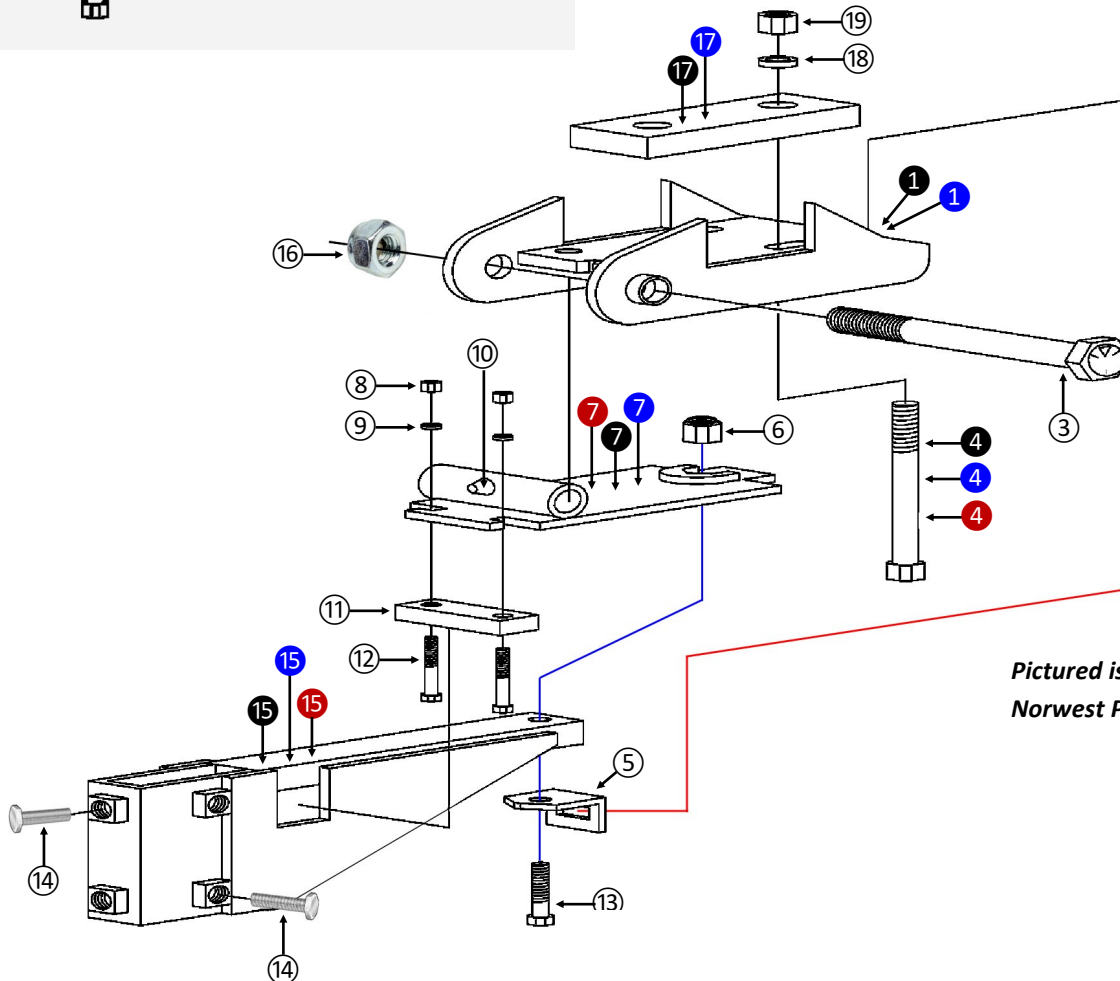
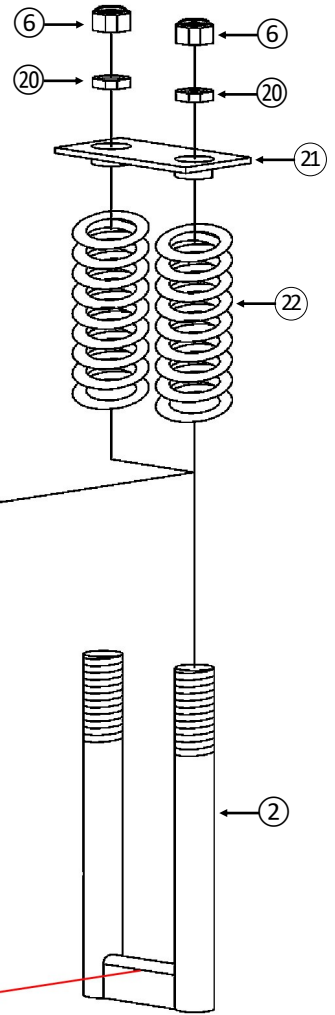
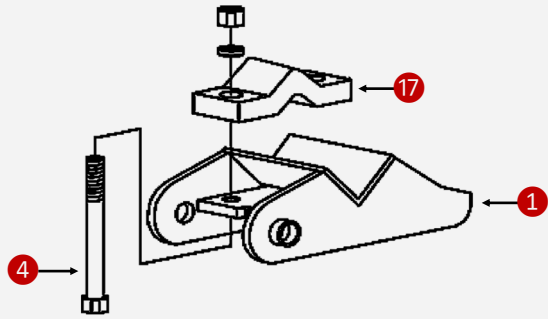


← CSHD4040

CSHD4040A →

DOUBLE SPRING TRIP CLAMPS	
SPRINGS: 500 Lbs. of TORQUE PER SQUARE INCH, EACH	
NORWEST PART NUMBER	DESCRIPTION
CSHD4040	Double Spring Trip Clamp for 4" x 4" Bar Attachment
CSHD7070	Double Spring Trip Clamp for 7" x 7" Bar Attachment
CSHD4040A	Double Spring Trip Clamp for 2-1/4" Diamond Bar Attachment

Pictured is a breakdown of **CSHD4040A**
Mounting Body with Fasteners



Pictured is a breakdown of
Norwest Part # CSHD4040

Reference Number	Description	Norwest Part Number	Required Pcs.
①	Clamp Body for 4" CSHD4040 Double Spring Trip Clamp	CSH-35812	1
①	Clamp Body for 7" CSHD7070 Double Spring Trip Clamp	CSH-35712	
①	Clamp Body for 2-1/4" CSHD4040A Double Spring Trip Clamp	CSH-35812A	
②	Tension Rod	CSH-35817	1
③	1" x 8" Grade 5 Hex Bolt	FHB100800G5	1
④	7/8" x 7" Grade 5 Hex Bolt	FHB78700G5	4
④	7/8" x 10" Grade 5 Hex Bolt	FHB781000G5	
④	7/8" x 5" Grade 5 Hex Bolt	FHB78500G5	
⑤	Tension Rod Strap	CSH-35819	1
⑥	3/4" Nylon Lock Nut	FYHN34	3
⑦	Mounting Plate for CSHD4040 & CSHD4040A	CSH-35815	1
⑦	Mounting Plate for CSHD7070	CSH-35715	
⑦	Mounting Plate for CSHD4040 & CSHD4040A	CSH-35815	
⑧	1/2" Hex Nut	FHN12	2
⑨	1/2" Lock Washer	FLW12	2
⑩	1/4" Grease Zert	1610	1
⑪	Bolt Bracket	CSH-35816	1
⑫	1/2" x 3" Grade 5 Hex Bolt	FHB12300G5	2
⑬	3/4" x 2-1/2" Grade 5 Hex Bolt	FHB34250G5	1
⑭	5/8" x 2" Grade 8 Hex Bolt	FHB58200G8	4
⑮	Standard Mount for CSHD4040 & CSHD4040A	CSH-35813	1
⑮	Standard Mount for CSHD7070	CSH-35713	
⑮	Standard Mount for CSHD4040 & CSHD4040A	CSH-35813	
⑯	1" Nylok Hex Nut	FYHN100	1
⑰	3/4" T1 Tool Bar Strap for CSHD4040	HD4040STRAP	2
⑰	3/4" T1 Tool Bar Strap for CSHD7070	HD7070STRAP	
⑰	3/4" x 2" Tool Bar Strap w/ 1" Round Hole	342SH	
⑱	7/8" Lock Washer	FLW78	4
⑲	7/8" Hex Nut	FHN78	4
⑳	3/4" Jam Nut	FJN34	2
㉑	Retaining Ring/Tension Rod Bracket	CSH-35818	1
㉒	Cultivator Compression Spring for Reset Spring Units	16-35814	2

CSHD4040; CSHD7070 & CSHD4040A BREAKDOWN ON PAGE 200-702



NORWEST

MANUFACTURING

See our Website for New Products & Promotions: www.norwest-mfg.com

SINGLE SPRING TRIP CLAMPS



CS4040

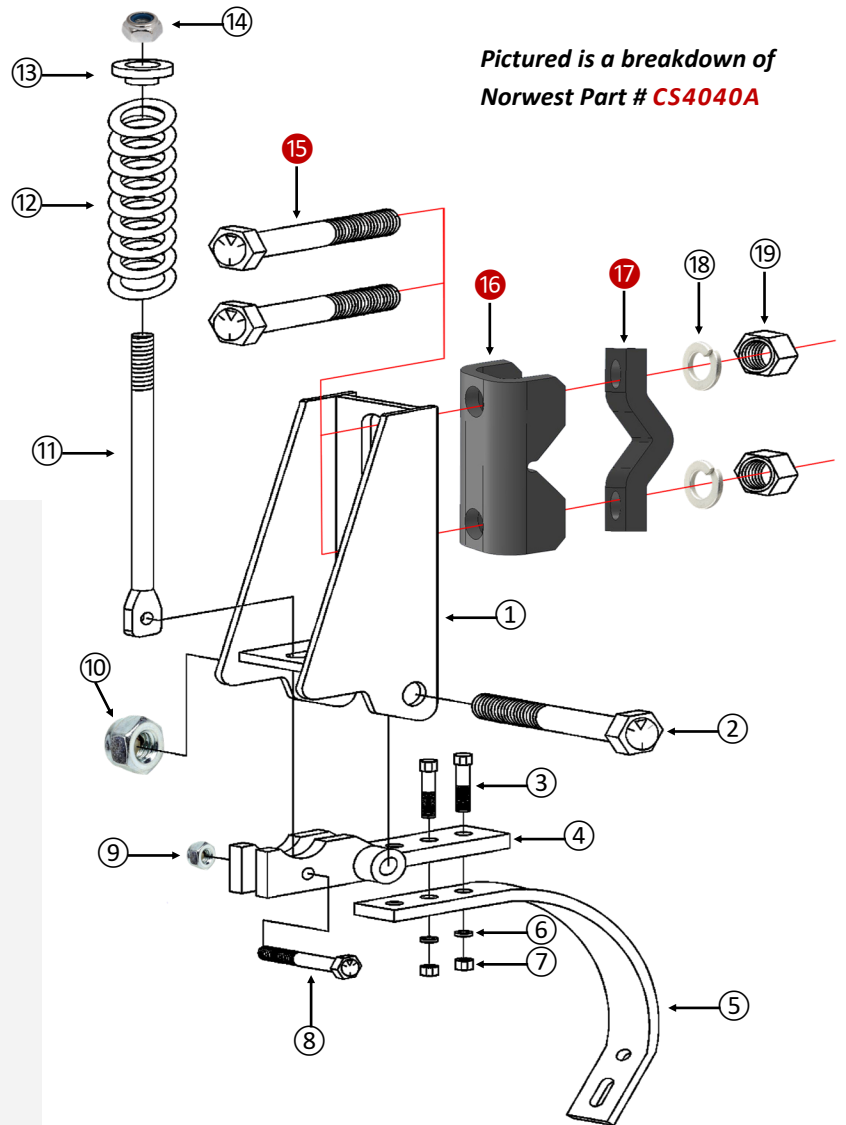
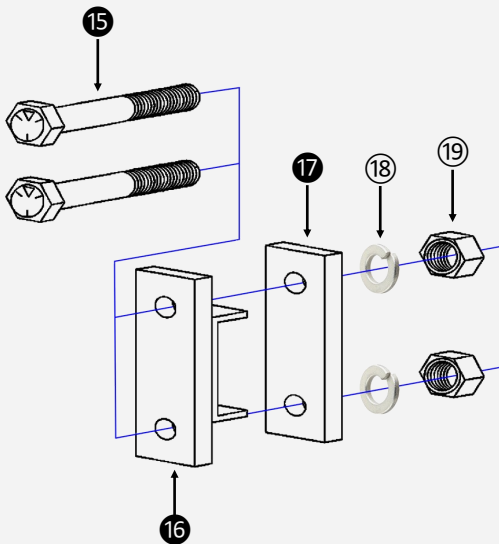
SINGLE SPRING TRIP CLAMPS	
SPRING: 500 Lbs. of TORQUE PER SQUARE INCH	
NORWEST PART NUMBER	DESCRIPTION
CS4040	Single Spring Trip Clamp for 4" x 4" Bar Attachment
CS4040A	Single Spring Trip Clamp for 2-1/4" Diamond Bar Attachment



CS4040A

Pictured is a breakdown of CS4040 Mounting Assembly with Fasteners.

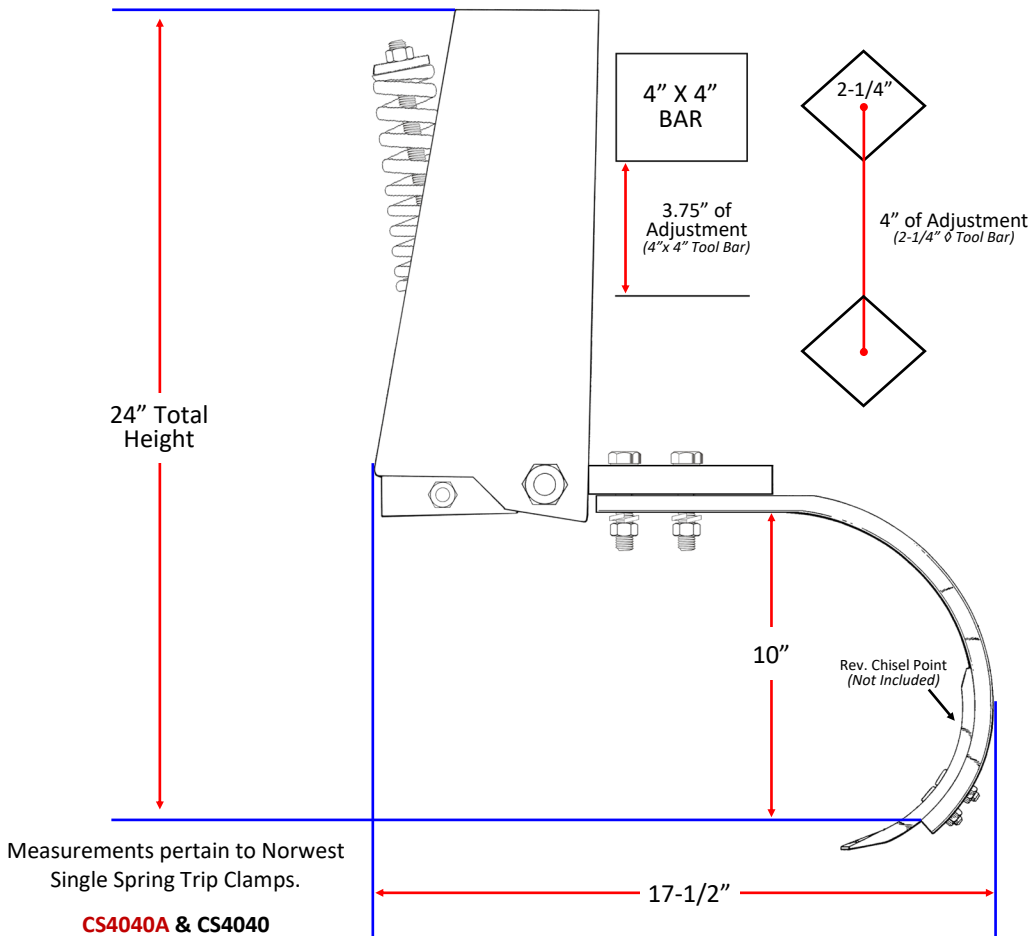
Uses 7/8" x 6" Hex Bolts



Pictured is a breakdown of Norwest Part # CS4040A

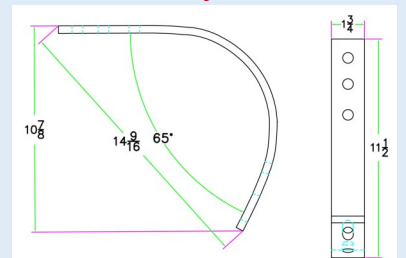
Reference Number	Description	Norwest Part Number	Required Pcs.
①	Clamp Body for CS4040 & CS4040A Single Spring Trip Clamps	CSH-35812	1
②	3/4" x 5" Grade 5 Hex Bolt	FHB34500G5	1
③	1/2" x 2" Grade 5 Hex Bolt	FHB12200G5	2
④	Shank Pivot Brace/Mounting Bracket	CS-35815	1
⑤	Spring Tooth Shank	16-35811	1
⑥	1/2" Lock Washer	FLW12	2
⑦	1/2" Hex Nut	FHN12	2
⑧	1/2" x 2-1/2" Grade 5 Hex Bolt	FHB12250G5	1
⑨	1/2" NYLOK Hex Nut	FYHN12	1
⑩	3/4" NYLOK Hex Nut	FYHN34	1
⑪	Tension Rod for CS4040 & CS4040A	CS-35817	1
⑫	Cultivator Compression Spring for Reset Spring Units	16-35814	1
⑬	Spring Bracket	CS-35813	1
⑭	7/8" NYLOK Hex Nut	FYHN78	1
⑮	7/8" x 8" Grade 5 Hex Bolt	FHB78800G5	2
⑮	7/8" x 6" Grade 5 Hex Bolt	FHB78600G5	
⑯	4" x 4" Tool Bar Strap for CS4040	CS40SH	1
⑯	1/2" X 2-1/2" Tool Bar Cap with 1-1/16" Bolt Holes	706	
⑰	3/4" x 2-1/2" Tool Bar Strap for CS4040	CS40S	1
⑰	3/4" x 2" Tool Bar Strap w/ 1" Round Hole	342SH	
⑱	7/8" Lock Washer	FLW78	2
⑲	7/8" Hex Nut	FHN78	4

CS4040 & CS4040A BREAKDOWN ON PAGE 200-704



Additional Information

- ◆ Width of the main body is 3-5/8"
- ◆ If adjustment is in the top position when the shank trips, it moves 6" to 7"
- ◆ Shank trips **Back** → and **Up** ↑
- ◆ **4" x 4" tool bar adjustment is measured from bottom of bar to top of bar.**
- ◆ **2-1/4" Ø tool bar adjustment is measured from center to**



Spring Shank
Norwest Part # 16-35811

SPRING TRIP SHANKS



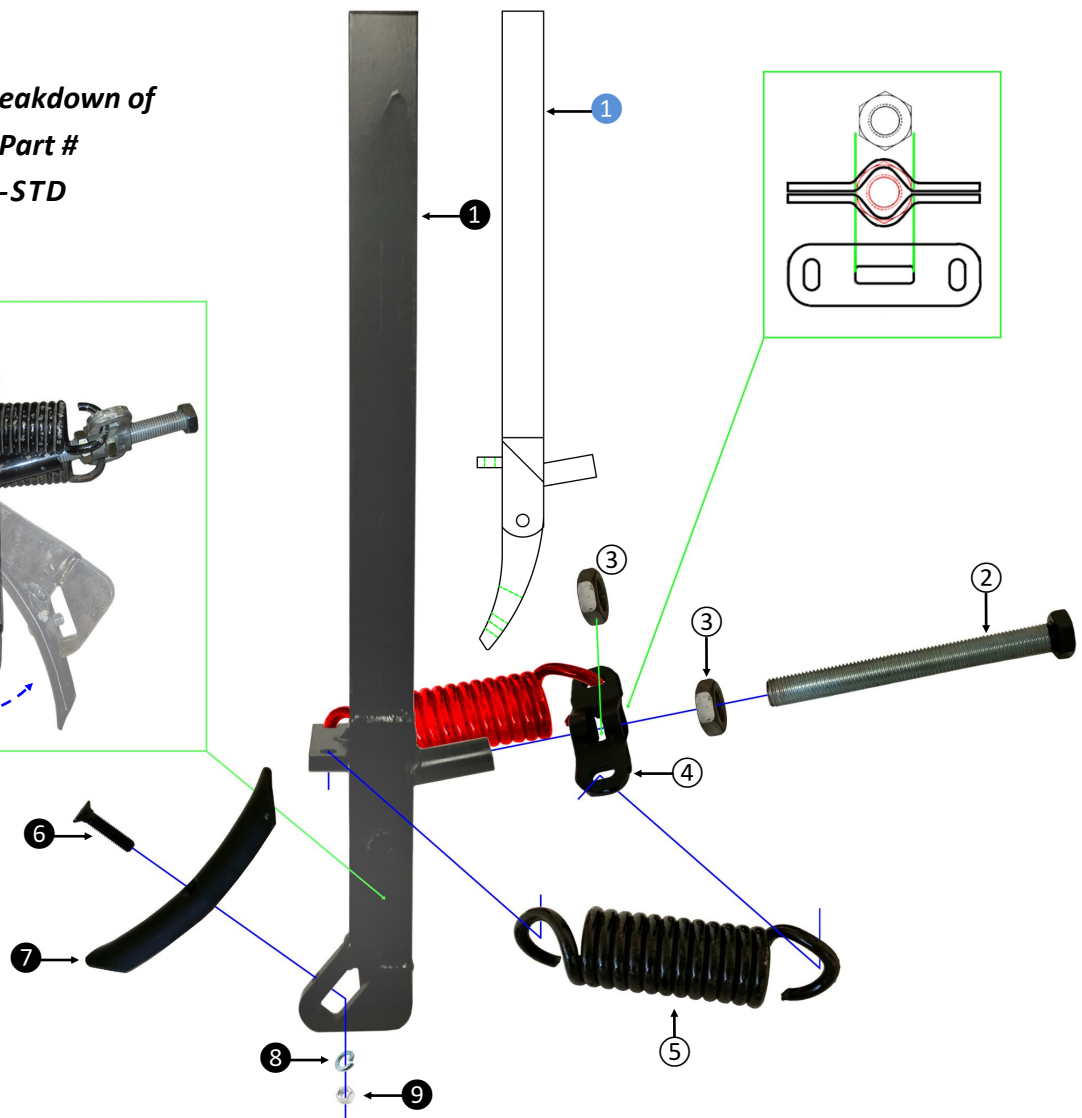
108071-STD

PART NUMBER	DESCRIPTION	WEIGHT
108071-STD	Norwest Spring Trip Shank 3/4" x 2-1/2" x 36" with TPVA25 Heavy Reversible Danish Point 10" x 2" x 1/4" (Import)	26.40 LBS.
108071-STF	Norwest Spring Trip Shank 3/4" x 2-1/2" x 36" with Forged Foot	25.00 LBS.



108071-STF

*Pictured is a breakdown of
Norwest Part #
108071-STD*



Reference Number	Description	Norwest Part Number	Required Pcs.
①	Trip Shank for 108071-STD	N/A	1
①	Trip Shank for 108071-STF	N/A	
②	1" x 10" Tension Rod for 108071-STD & 108071-STF	108071-STD1	1
③	1" Jam Nut	FJN100	2
④	Spring Attachment Bracket for 108071-STD & 108071-STF	108071-STD2	1
⑤	Cultivator Extension Spring	108-814	2
⑥	3/8" x 1-3/4" (10mm x 45mm) Danish Elliptical Head Bolt w/ Nut for 108071-STD Only	SB3878	1
⑦	10" x 2" x 1/4" Heavy Reversible Danish Point for 108071-STD Only	TPVA25	1
⑧	7/16" Lock Washer for 108071-STD Only	FLW76	1
⑨	Metric Hex Nut for 108071-STD Only	n/a	1

108071-STD & 108071-STF BREAKDOWN ON PAGE 200-706

Available at Norwest

See [Section 10 - Hay Parts](#) for
Bale Spears & More

BALE SPEARS

BF-24 • 24" Bale Spear

BF-33 • 33" Bale Spear

BF-39 • 39" Bale Spear

BF-49 • 49" Bale Spear

BF-55 • 55" Bale Spear - **NEW!**

BUSHINGS

BF-S25 • Small Sleeve for 24" Bale Spears

BF-S50 • 2-1/8" x 4-3/4" Standard Bushing

BF-S50H • 2-1/8" x 5-1/2" Extra Long Bushing - **NEW!**

BALE SPEAR NUTS

BF-HNUT • Heavy Duty Nut for 33" - 55" Spears

BF-LNUT • Small Nut for 24" Spears

**BEST BALE SPEARS
PERIOD.**



Place Your Order Today!

208-436-1770

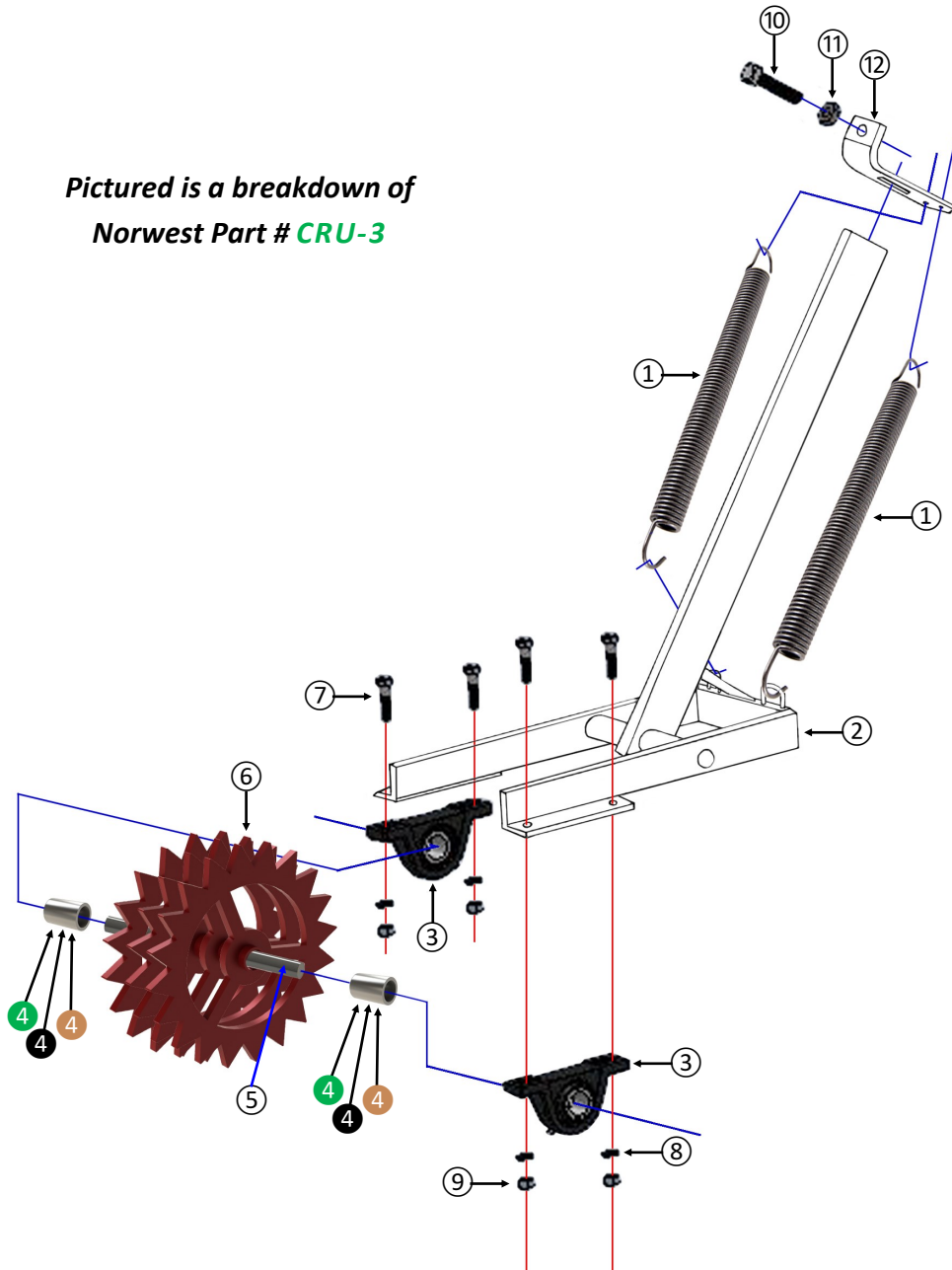




Crust Buster

SPRING LOADED CRUST BUSTERS	
NORWEST PART NUMBER	DESCRIPTION
CRU-3	Norwest 12-1/4" by 3 Ring Spring Loaded Crust Buster
CRU-4	Norwest 12-1/4" by 4 Ring Spring Loaded Crust Buster
CRU-5	Norwest 12-1/4" by 5 Ring Spring Loaded Crust Buster

*Pictured is a breakdown of
Norwest Part # **CRU-3***



www.norwest-mfg.com

Reference Number	Description	Norwest Part Number	Required Pcs.
①	Plated Extension Spring for Crust Buster	CRU-SPRING	2
②	Crust Buster Yoke Assembly with 5/8" x 2" x 24" Shank	CRU-YOKE	1
③	1" ECC. Pillow Block w/Low Shaft Height (Bearing)	HCLP205-16/2	2
④	Exterior Spacer for CRU-3 : 1" Schedule 40 Pipe 2" Long	CRU-SIDE3 SPACE	2
④	Exterior Spacer for CRU-4 : 1" Schedule 40 Pipe 1-1/4" Long	CRU-SIDE SPACER	
④	Exterior Spacer for CRU-5 : 1" Schedule 40 Pipe 1/2" Long	CRU-SIDE5 SPACE	
⑤	1" x 13" Axle for Crust Buster	CRU-4 AXEL	2
⑥	Crust Buster Star Wheel (12-1/8" Diameter; 1/2" Material)	CRU-WHEEL	CRU-3 = 3 pcs. CRU-4 = 4 pcs. CRU-5 = 5 pcs.
⑦	3/8" x 1-1/2" Grade 5 Hex Bolt	FHB38150G5	4
⑧	3/8" Lock Washer	FLW38	4
⑨	3/8" Hex Nut	FHN38	4
⑩	1/2" x 2-1/2" Square Head Set Screw	FSHSS12250	1
⑪	1/2" Hex Nut	FHN12	1
⑫	Shank Mount Spring Bracket	CRU-SBRACKET	1

CRU-3; CRU-4 & CRU-5 BREAKDOWN ON PAGE 200-708

